



Objectives:

- Create a small cloudscape painting using PanPastel.
- Apply knowledge of atmospheric perspective, layering color, blending

Grade Level:

Middle & High School Grades / Age 11-18

Pre-Lesson ideas:

1. Create a Power Point presentation with examples of cloudscape paintings found online (search for "cloud landscape" online) and cloudscape photography. Use examples from the lesson to create a step-by-step Powerpoint presentation or print out for students to use as reference images as they work.
2. Provide 1-2 color copies of the example image per table or project the image onto a screen in the classroom.
3. Explain to students how, due to the atmosphere, the sky color appears lighter towards the horizon - therefore their sky should be a gradation from light (at the skyline) to darker as it moves away from the land.

Explain how the time of day/lighting affects the shadows on the clouds. Make sure students understand that the land mass will be darker because of the back lighting form.

4. Hold a teacher driven demonstration of how to apply and blend PanPastel (basic techniques at PanPastel.com).

Materials:

PanPastel Colors:

Titanium White (100.5) Paynes Grey Tint (840.7) Turquoise (580.5)
 Burnt Sienna Tint (740.8) (or substitute with yellow tints)
 Magenta Extra Dark (430.1) Chromium Oxide Green Shade (660.3)
 Ultramarine Blue Tint (520.8)

Grounds: Smooth heavyweight paper works best for this lesson. Several options can be used e.g. Pastelmat, Colourfix paper, basic pastel/drawing papers or illustration board

Soft Tools: Sofft Knife with Cover No. 3 (Oval), Angle Slice Round Sponge, and Sponge Bars

Miscellaneous: Paper towels and eraser



Related Terms To Know:

Contrast Blending (gradation)
 Atmospheric Perspective



PANPASTEL COLORS
 Apply Pastel Color Like Paint



Download this lesson plan :
paintdrawblend.com/art-education-resources

Lesson Plan Developed by: Megan Buccere,
 Visual & Performing Arts Dept. Head - Zachary High School Zachary, LA (USA)



1. Using a Sofft Knife/Cover students should sketch basic shapes of clouds and land mass using Payne's Grey Tint (840.7).



2. Using a Sofft Angle Slice Round sponge, students should begin applying Turquoise (580.5) to the paper starting at the top and working down, leaving drawn cloud areas mostly uncovered.



3. As they move down students should load some White (100.5) and/or Ultramarine Blue Tint (520.8) on their sponge (Sofft Sponge Bar shown). Begin blending the Turquoise, White & Ultra. Blue Tint by moving the sponge in a circular motion. If sponge becomes too saturated with color use a paper towel to clean off the sponge and to clean between colors.



4. Using Sofft Tool (Sponge Bar or Oval Knife) students should begin adding Magenta Extra Dark (430.1) in a circular motion to the underside of cloud forms.



5. As students build the base form of the clouds they should clean off their sponge on a paper towel and pick up some Titanium White (100.5) PanPastel. Add the white to the top portion of the clouds.

Using a Sofft Knife or Sponge Bar pick up a small amount of Burnt Sienna Tint (740.8) and add it to the left side of the cloud forms.



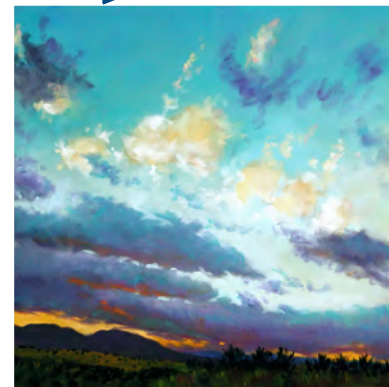
7. Using White add any highlights to the top and middle portion of the cloud forms. Students should now use Sofft Tools to go in and clean up any areas that need to be detailed.



6. At this point students should now begin working on the land area of the picture. Using Sofft Knife/Cover or Sponge bar to pick up Chromium Oxide Green Shade (660.3) build a hill form at the bottom of the page.

Students may also mix with some Black (800.5) at this time to create a darker shade.

FREE ONLINE LANDSCAPE PAINTING
VIDEO WORKSHOP
at PanPastel.com



Deborah Secor (100% PanPastel)

Surfaces

PanPastel can be used on most surfaces, from smooth to textured, including:

- ▶ Drawing Papers
- ▶ All Pastel Surfaces
- ▶ Watercolor Papers
- ▶ Handmade & Delicate Papers
- ▶ Vellum
- ▶ Printmaking Papers
- ▶ Wood
- ▶ Canvas

PANPASTEL® Resources

PanPastel Colors are professional artists' quality soft pastel colors in a unique pan format (cake-like). The special qualities of PanPastel Colors mean that artists can blend and apply pastel (dry) color like paint for the first time.

They are made using a unique manufacturing process resulting in rich, ultra soft and super-blendable colors.

Each color is loaded with the finest quality artists' pigments for the most concentrated colors possible. The colors have excellent lightfastness and are fully erasable.

PanPastel colors are an excellent way to introduce color using a dry medium for drawing and painting techniques.



Mixed Media

Donna Downey
PanPastel & modeling paste



ONLINE WORKSHOP
VIDEOS
(MIXED MEDIA KITS)



SCAN FOR
ALL DEMO
VIDEOS

Unique Pan Format

The pan format changes everything - enabling pastel colors to be applied like paint.

4-5 Times*
More Coverage
Than Sticks!

Instant Color

No preparation or drying time required - no solvents or water needed.

Mixable

Mix colors like paint. A great way to introduce color using a dry medium.

Functional Packaging

Plastic base keeps colors separate & clean. Thread together for compact storage. Base labelled for easy color ID.

Mixed Media Friendly

Use with other artist's media & most surfaces.

Erasable

Use any eraser to easily change/correct. Very forgiving.

Low Dust

Cleaner to use. Less waste.

Highly Pigmented

92 Rich concentrated colors, last longer. Professional quality & lightfast.

Conforms to
ASTM D-4236

*Each pure color has a corresponding tint, shade & extra dark (as shown).

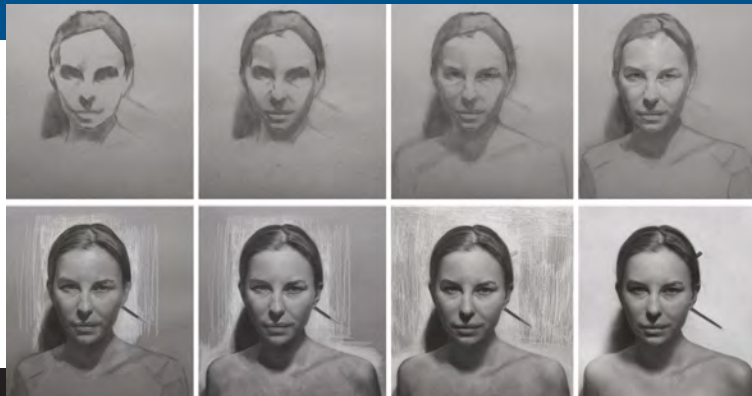
Drawing

PanPastel is popular for drawing & sketching techniques.

DAVID KASSAN:

"I've been using PanPastel now for the past 6 years, I started using them for the basic block-ins for my charcoal drawings, because they offer the artist a painterly expressive approach to handing an otherwise linear approach. PanPastel has really changed the way I make paintings and drawings, it has given my realist work an expressive foundation on which to build on."

For DVD, Videos & Workshops visit: DavidKassan.com



David Kassan "Aubrey"
PanPastel Black & Softt Knife No.4
with General Pencil White Charcoal Pencil

Hand-Coloring

DIGITAL PanPastel works well on digital (non-glossy) papers, so it is the perfect medium to hand-color digital prints and photographs. The ability to apply semi-transparent layers of color allows the image to show through.



1. Convert any image* to black & white using Photoshop or similar photo editing software.
*Suggestions: self-portrait, still life etc.

2. Print image on good quality ink-jet or laser paper.

3. Using a Softt Tool e.g. Applicator (63070), apply PanPastel color lightly to image, building up transparent layers.



PanPastel Hand-Colored Ink-Jet Photographic Print
PhotoArtistryWorkshop.com Dianne Poinski "Illuminated"

Classroom Tips:

- ▶ **Demonstrate how to lift color** - by swiping pan surface with sponge 1-2 times. Show students that they should not dig or use pressure when lifting color as that creates unnecessary dust.
- ▶ **Mix colors like paint** either on working surface or pan surface
Note: traditional color mixing rules apply, e.g. don't overblend to avoid "mud".
- ▶ **Clean Softt Tools** between colors by wiping gently on a dry paper (kitchen) towel.
- ▶ **Clean pan surfaces** by gently wiping away any color contamination with a clean Softt sponge or paper towel.
- ▶ **Color layers can be isolated** with workable (spray) fixative.
- ▶ **Experiment with different surfaces** - on smoother surfaces the color lays down in more transparent layers. On textured surfaces the color is more intense as the tooth "grabs" more color.



Palette Tray for 20 Colors
(Empty Ref. 35020)

PALETTE TRAYS

Each palette tray includes a cover for **quick and easy classroom set-up and storage.**

Place colors in palette trays for each table. Students can share the colors using individual Softt Tools to apply the colors.

TIP Apply thin transparent layers. Before applying remove any excess color from the applicator on a dry paper towel.